



Mission Middle Community School



Community Schools is an initiative that brings stakeholders-students, family members, staff, and community members- together to determine what the shared vision, goals, and values are for our school.

We start by asking questions, seeking input and feedback with on-going problems.

Participation in our Assets and Needs Assessment:



Participation occurred from February- April '25

What did we learn?

Students

- Problems that make school difficult: 51.5% Stressed, 38% difficulty with schoolwork, 17.8% Mental Health
- The transition to 6 teachers is difficult
- Would like to learn how to study and stay organized
- 64% feel positively about school
- Would like the following activities: 54% sports, 39.9% Creative Arts, 14.7% STEM
- 45% feel their opinions are heard by the adults at school

School Staff

- Believe students are facing these challenges that make school difficult: 93.8% Family Relational Stress, 71.9% Mental Health, 59.4% Difficulty Expressing their Needs
- 68.8% are aware of how to connect students with services in JUSD
- 50% can describe the 4 pillars of CS

Families

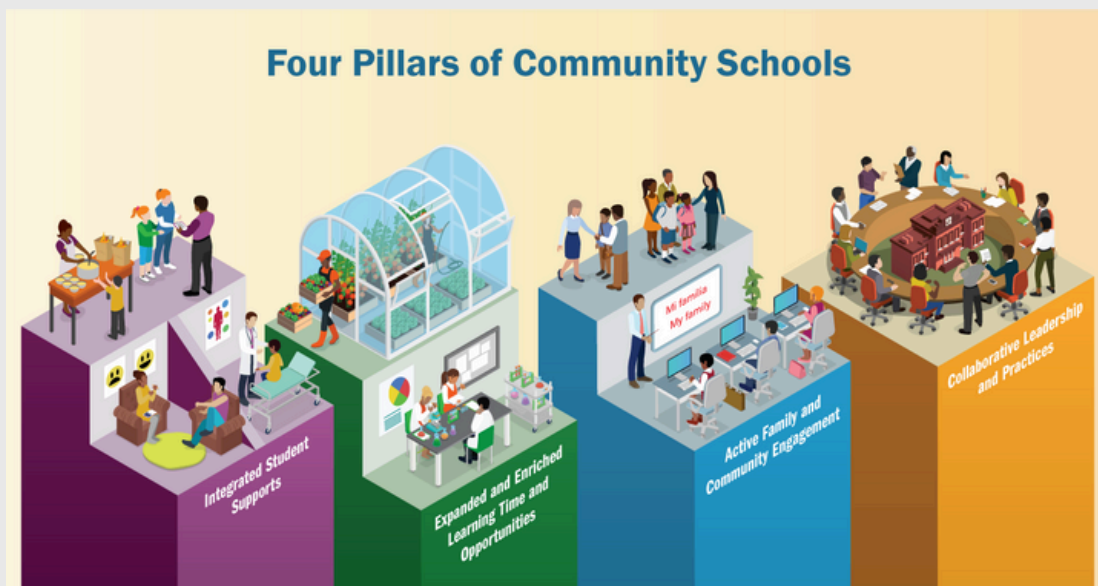
- Challenges that make supporting their student difficult: 26.7% Mental Health, 22.9% Relational Stress, 14.3% Food/Nutrition, Finances, and Language Barrier
- Challenges their student needs support in: 37% Coping with Stress, 25.7% Social Relationships, 17% Technology/Social Media
- 88.6% feel they have the tools to support their child's learning
- Would like to see the following classes: 42.9% Bullying Prevention, Workshops on helping their Children, 37% Fitness, 34% College/Career

Community Members

- We have connected with 2 food vendors that are willing to help with community events
- Working with Reach Out JV on putting in a garden and repainting crosswalk/driveways
- The organizations providing parent workshops are flexible to help support our community

Stakeholder responses and school data determines our **2025-26 Priority Needs** based on the 4-pillars of Community Schools:

- Integrated Student Supports
- Expanded and Enriched Learning Time and Opportunities
- Active Family and Community Engagement
- Collaborative Leadership and Practices



Mission Middle School 2024-25 Community School Highlights

Integrated Supports

- Wellness Center with a BHA and BHPS
- Dental Visits
- Wellness Activities
- Informative Presentations
- Celebrations for Positive Behavior
- Restorative Practices and Trauma Informed Practices Training
- Activities at Lunch

Active Family and Community Engagement

- Mental Health, Wellness, and Parenting Workshops
- Watch DOGS/MOMS
- Family Nights
- Zumba Toning

Collaborative Leadership and Practices

- Student Advisory Council
- Community Schools Committee
- Coordination of Services Team
- School Site Council
- ELAC
- Second Teams

Expanded and Enriched Learning Time and Opportunities

- Speciality Advisory Classes
- Educational Fieldtrips
- Tutoring with RHS Mathletes
- After School Clubs- Ballet Folklorico, Crafting Club, Baseball, Soccer, HealthCorps